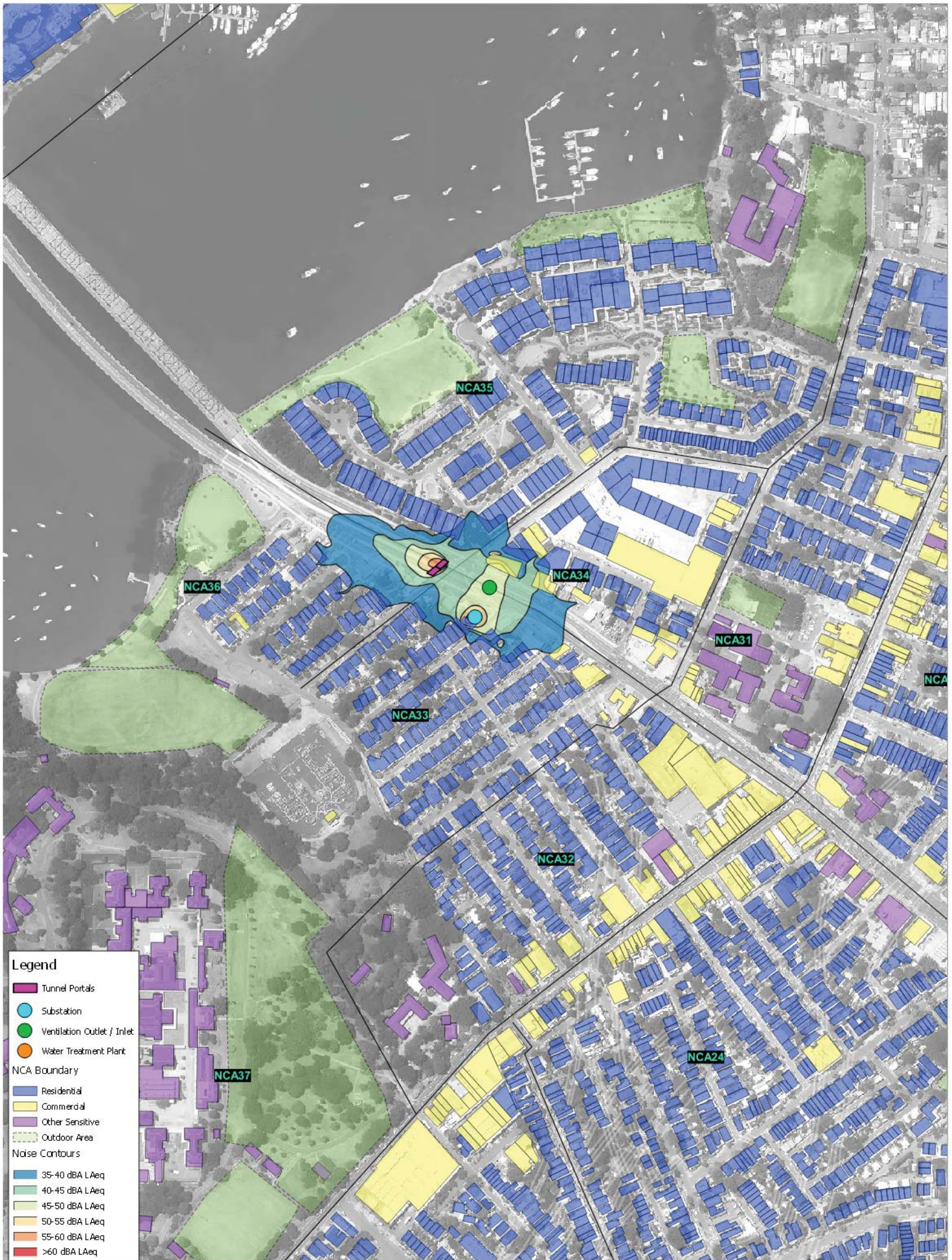


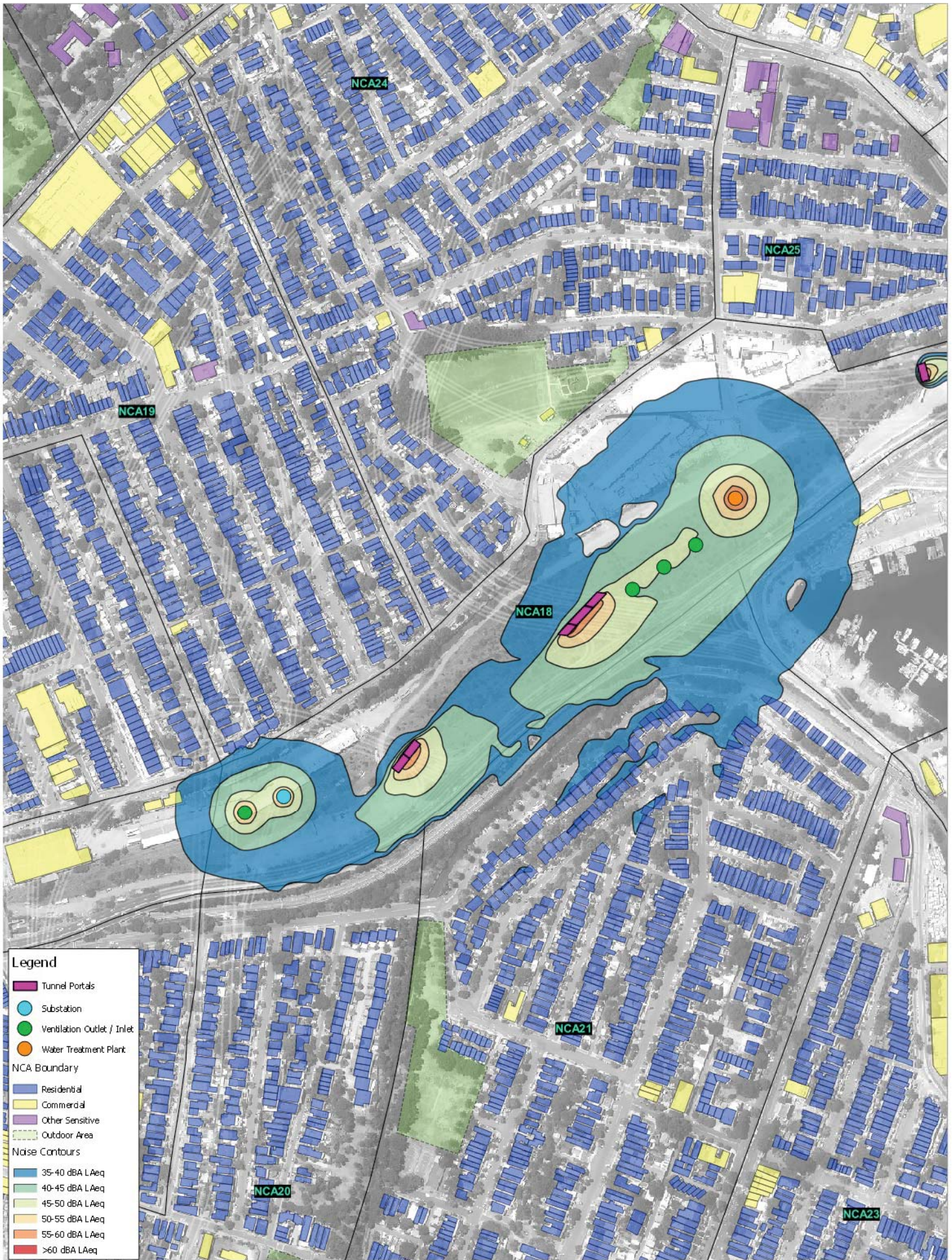


- Legend**
- Tunnel Portals
 - Substation
 - Ventilation Outlet / Inlet
 - Water Treatment Plant
- NCA Boundary**
- Residential
 - Commercial
 - Other Sensitive
 - Outdoor Area
- Noise Contours**
- 35-40 dBA LAeq
 - 40-45 dBA LAeq
 - 45-50 dBA LAeq
 - 50-55 dBA LAeq
 - 55-60 dBA LAeq
 - >60 dBA LAeq



- Legend**
- Tunnel Portals
 - Substation
 - Ventilation Outlet / Inlet
 - Water Treatment Plant
 - NCA Boundary
 - Residential
 - Commercial
 - Other Sensitive
 - Outdoor Area
 - Noise Contours
 - 35-40 dBA LAeq
 - 40-45 dBA LAeq
 - 45-50 dBA LAeq
 - 50-55 dBA LAeq
 - 55-60 dBA LAeq
 - >60 dBA LAeq

The content contained within this document may be based on third party data. SLR Consulting Australia Pty Ltd does not guarantee the accuracy of such information.



Legend

- Tunnel Portals
- Substation
- Ventilation Outlet / Inlet
- Water Treatment Plant

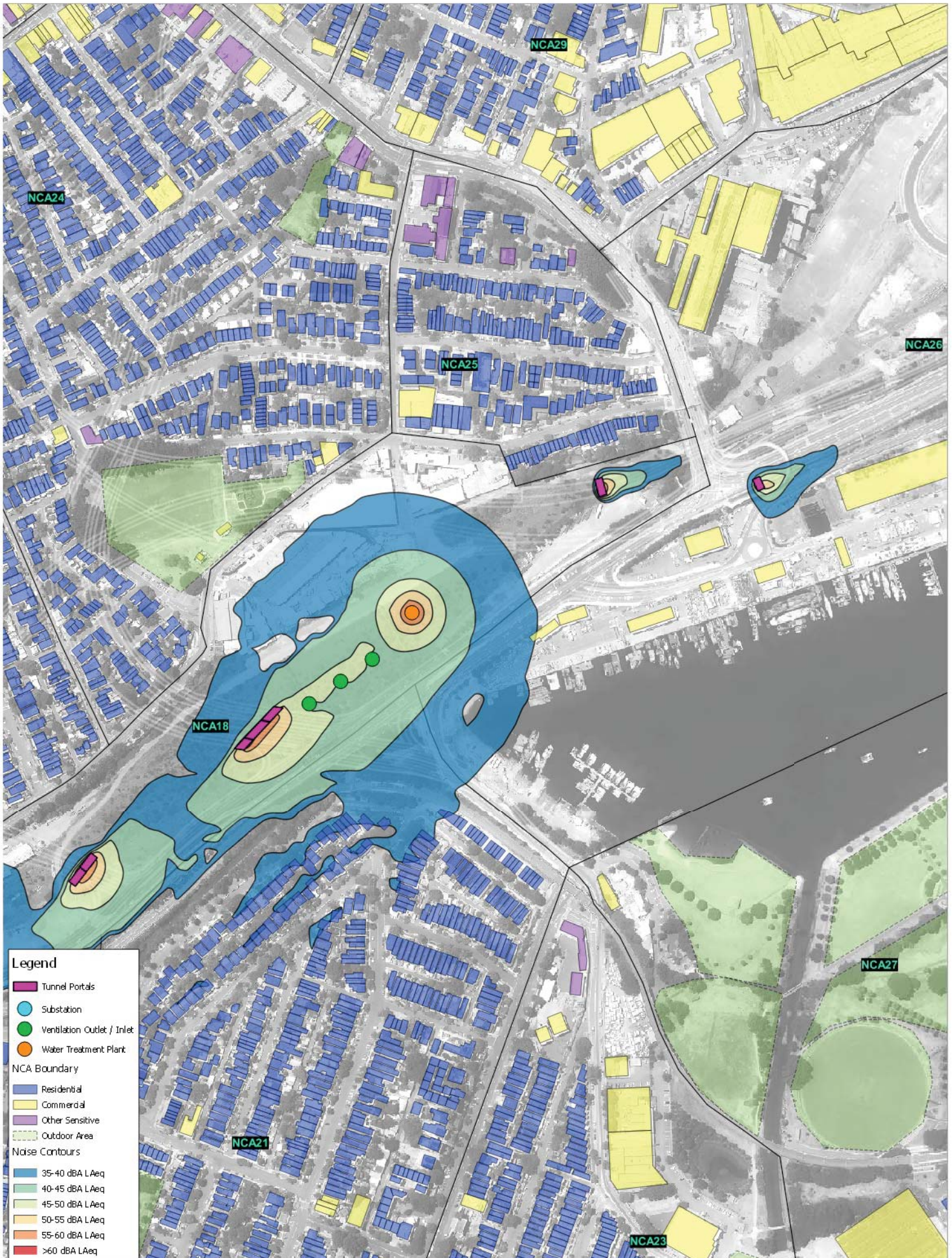
NCA Boundary

- Residential
- Commercial
- Other Sensitive
- Outdoor Area

Noise Contours

- 35-40 dBA LAeq
- 40-45 dBA LAeq
- 45-50 dBA LAeq
- 50-55 dBA LAeq
- 55-60 dBA LAeq
- >60 dBA LAeq

The content contained within this document may be based on third party data. SLR Consulting Australia Pty Ltd does not guarantee the accuracy of such information.



Legend

- Tunnel Portals
- Substation
- Ventilation Outlet / Inlet
- Water Treatment Plant

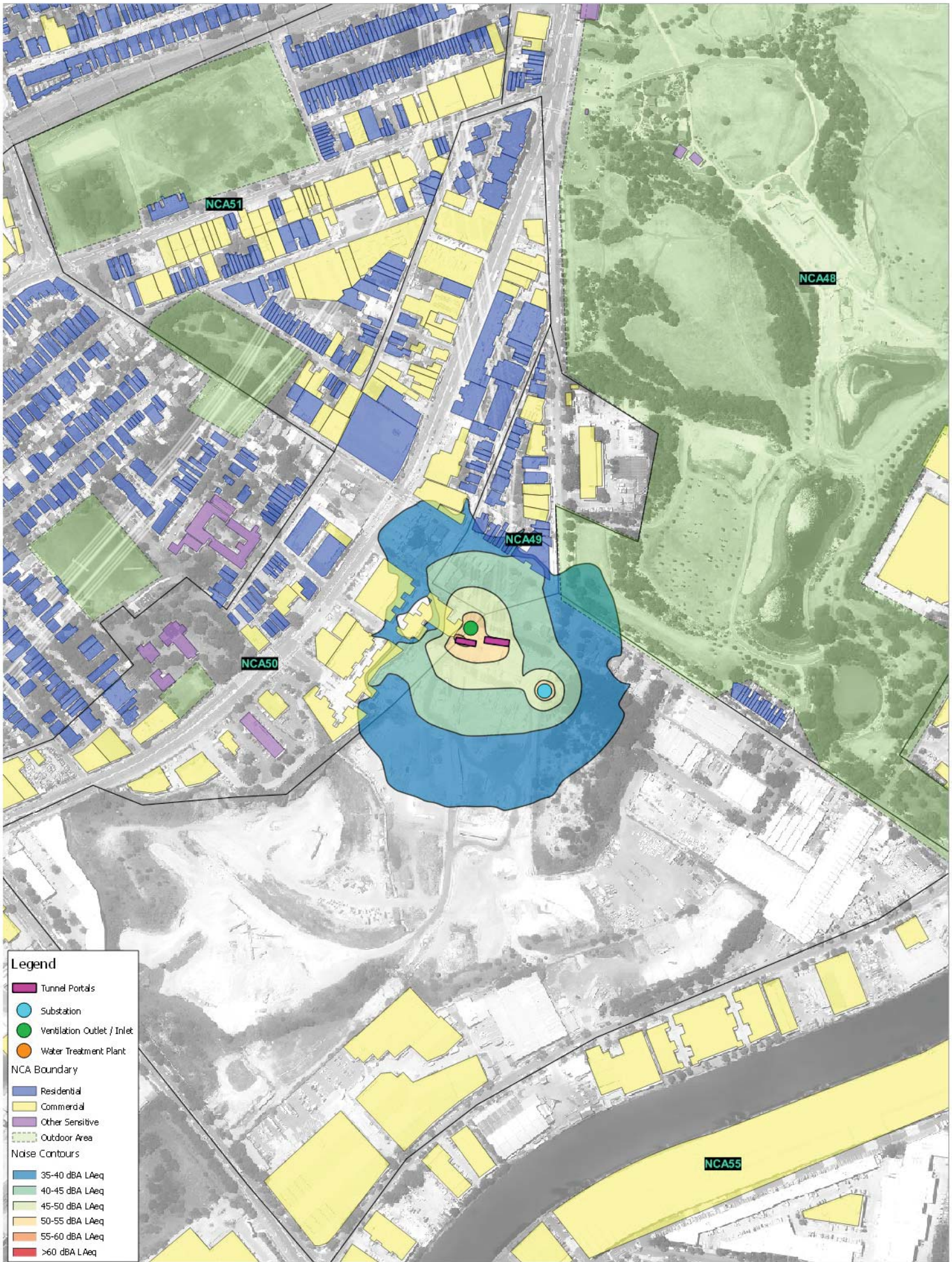
NCA Boundary

- Residential
- Commercial
- Other Sensitive
- Outdoor Area

Noise Contours

- 35-40 dBA LAeq
- 40-45 dBA LAeq
- 45-50 dBA LAeq
- 50-55 dBA LAeq
- 55-60 dBA LAeq
- >60 dBA LAeq

The content contained within this document may be based on third party data. SLR Consulting Australia Pty Ltd does not guarantee the accuracy of such information.



Legend

- Tunnel Portals
- Substation
- Ventilation Outlet / Inlet
- Water Treatment Plant
- NCA Boundary**
- Residential
- Commercial
- Other Sensitive
- Outdoor Area
- Noise Contours**
- 35-40 dBA LAeq
- 40-45 dBA LAeq
- 45-50 dBA LAeq
- 50-55 dBA LAeq
- 55-60 dBA LAeq
- >60 dBA LAeq

