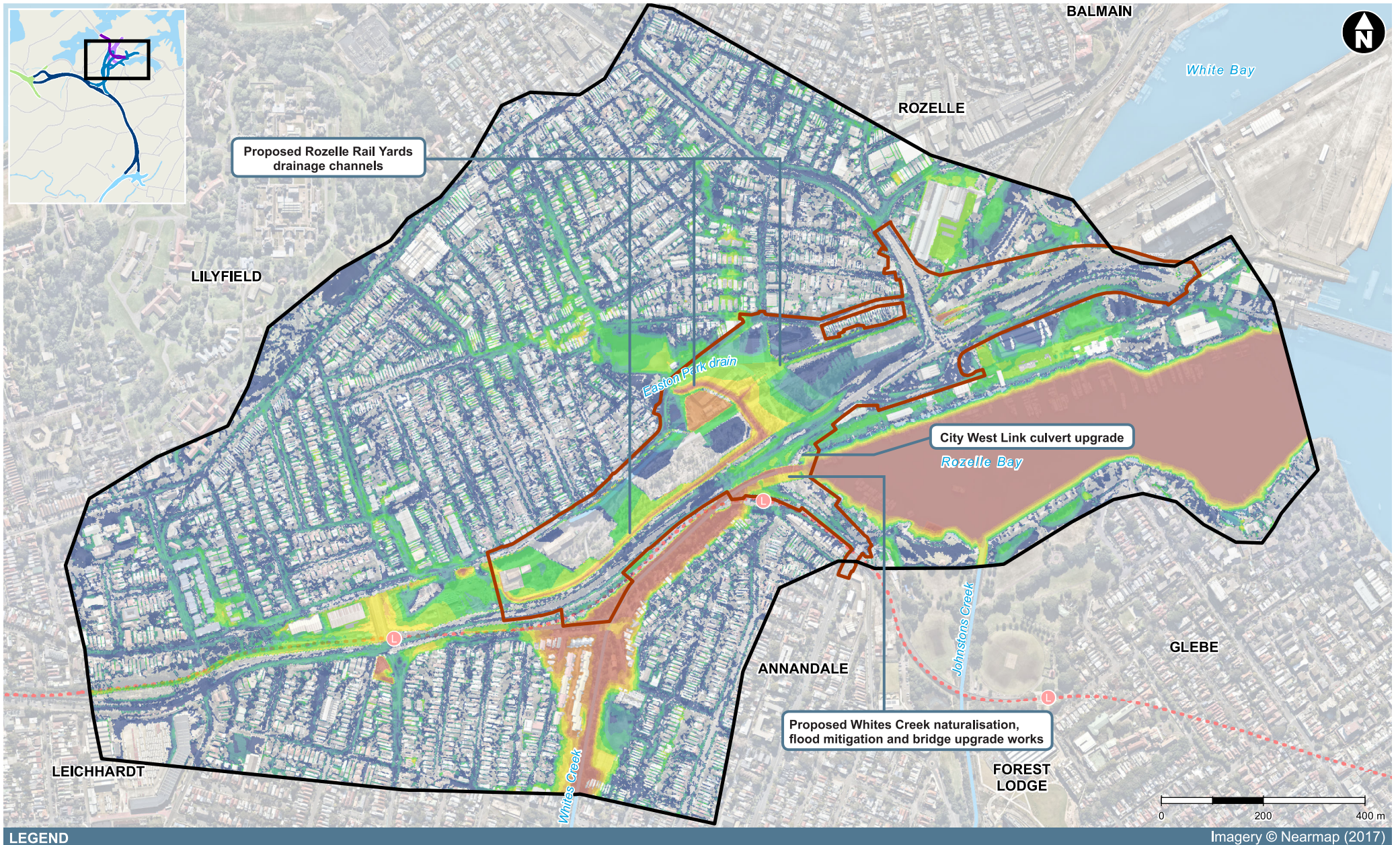


LEGEND

Existing features	M4-M5 Link	Peak flood depths (m)		
Waterway	Project footprint	<0.05	0.25 to 0.5	1.5 to 2.0
Light rail	Model extent	0.05 to 0.1	0.5 to 1.0	2.0 to 2.5
Light rail stop		0.1 to 0.25	1.0 to 1.5	>2.5

Figure 6-2 Proposed design conditions flood behaviour – Rozelle interchange - peak flood depths (100 year ARI)



LEGEND

Existing features	M4-M5 Link	Peak flood depths (m)
— Waterway	— Project footprint	<0.05
- - - Light rail	— Model extent	0.05 to 0.1
Ⓛ Light rail stop		0.1 to 0.25
		0.25 to 0.5
		0.5 to 1.0
		1.0 to 1.5
		1.5 to 2.0
		2.0 to 2.5
		>2.5

Figure 6-3 Proposed design conditions flood behaviour – Rozelle interchange - peak flood depths (PMF)

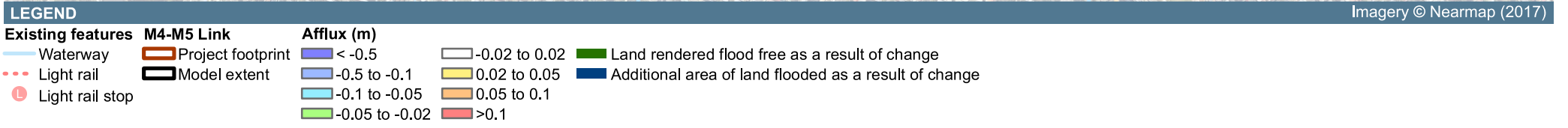
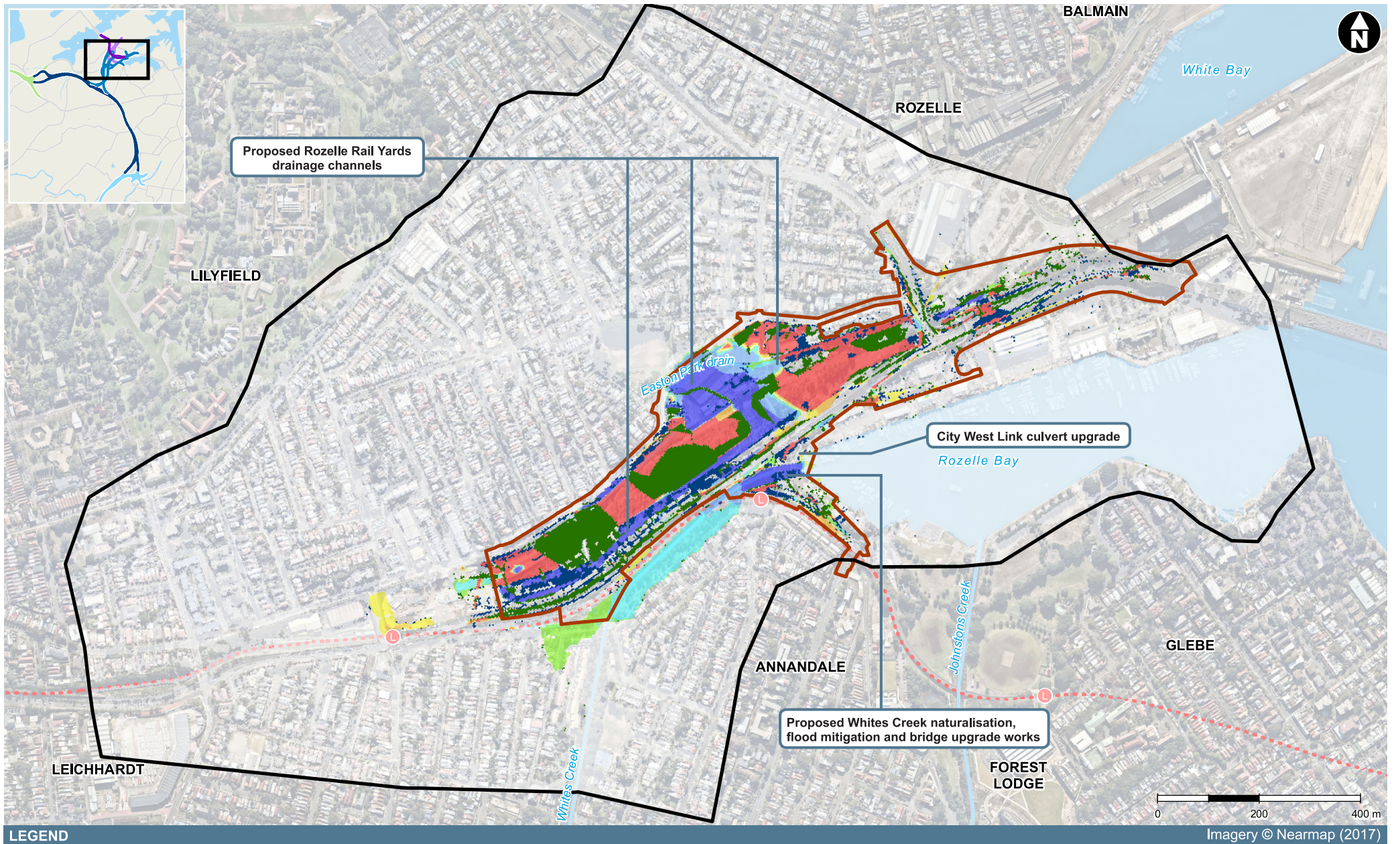
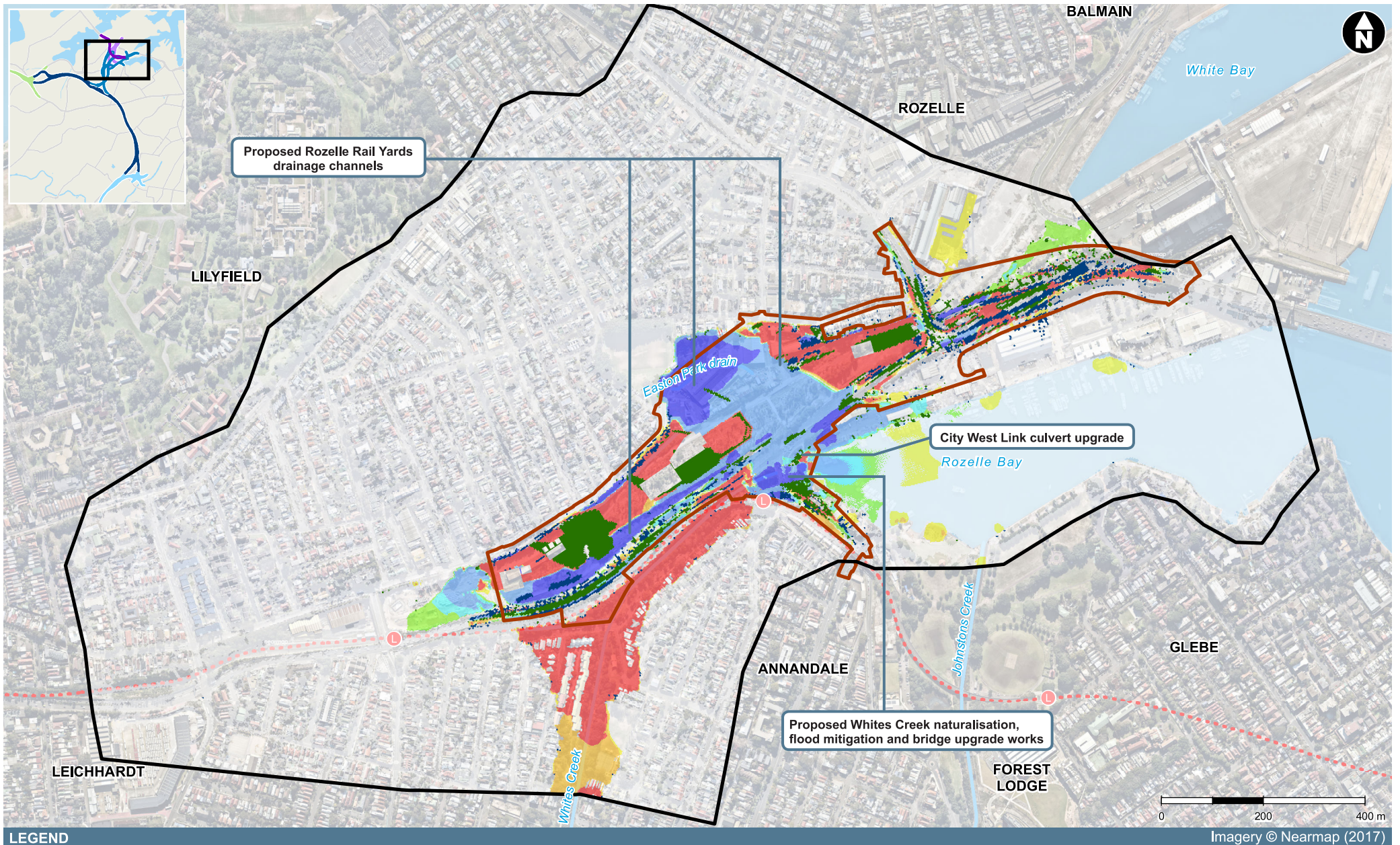


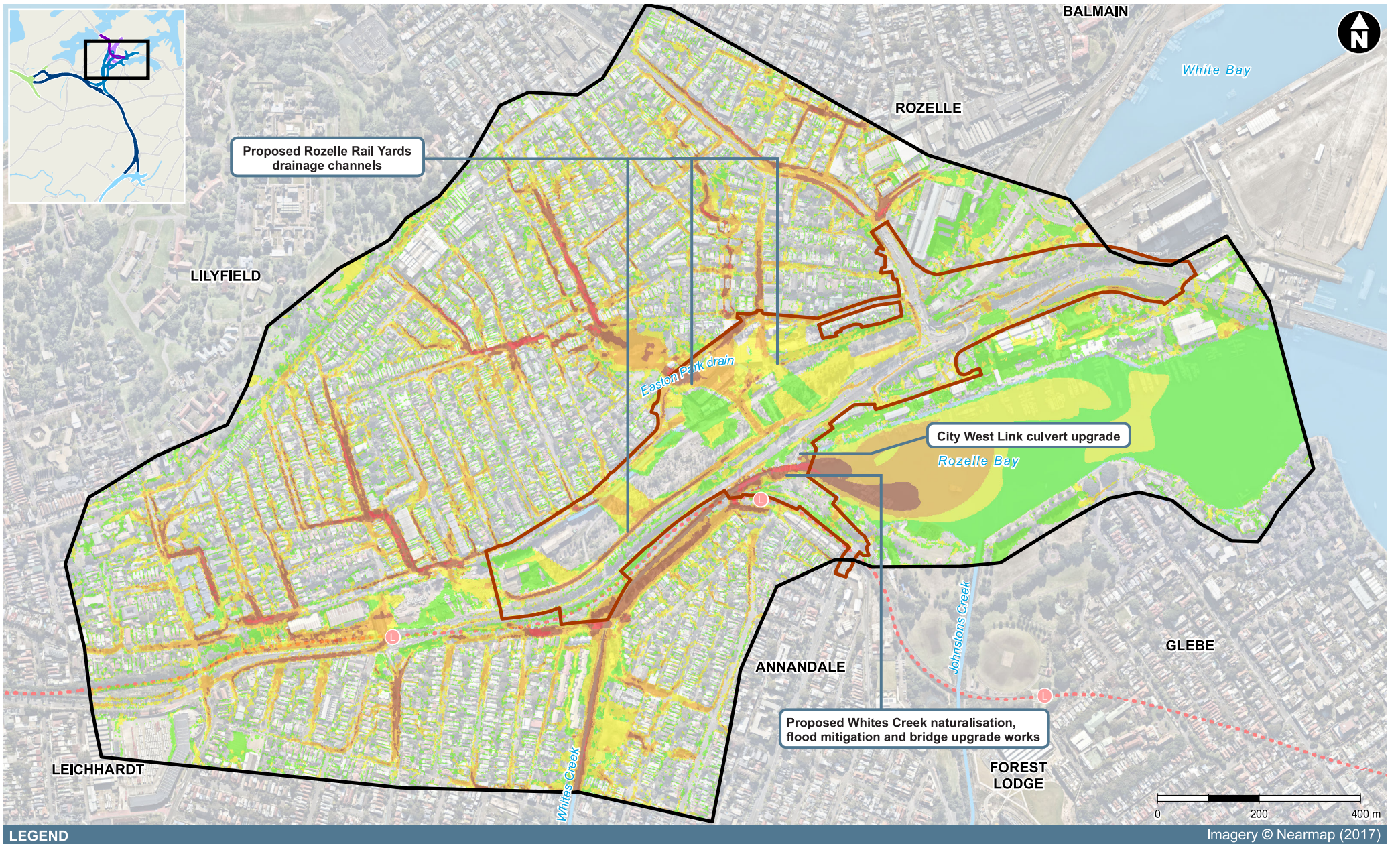
Figure 6-4 Proposed design conditions flood behaviour – Rozelle interchange - relative flood impact (100 year ARI)



LEGEND

Existing features	M4-M5 Link	Afflux (m)		
Waterway	Project footprint	< -0.5	-0.02 to 0.02	Land rendered flood free as a result of change
Light rail	Model extent	-0.5 to -0.1	0.02 to 0.05	Additional area of land flooded as a result of change
Light rail stop		-0.1 to -0.05	0.05 to 0.1	
		-0.05 to -0.02	>0.1	

Figure 6-5 Proposed design conditions flood behaviour – Rozelle interchange - relative flood impact (PMF)



LEGEND

- | | | |
|--------------------------|---------------------|-----------------------------------|
| Existing features | M4-M5 Link | Peak flow velocities (m/s) |
| — Waterway | — Project footprint | 0 - 0.2 |
| - - - Light rail | — Model extent | 0.2 - 0.5 |
| Ⓛ Light rail stop | | 0.5 - 1 |
| | | 1 - 2 |
| | | >2 |

Imagery © Nearmap (2017)

Figure 6-6 Proposed design conditions flood behaviour – Rozelle interchange - peak flow velocities (100 year ARI)

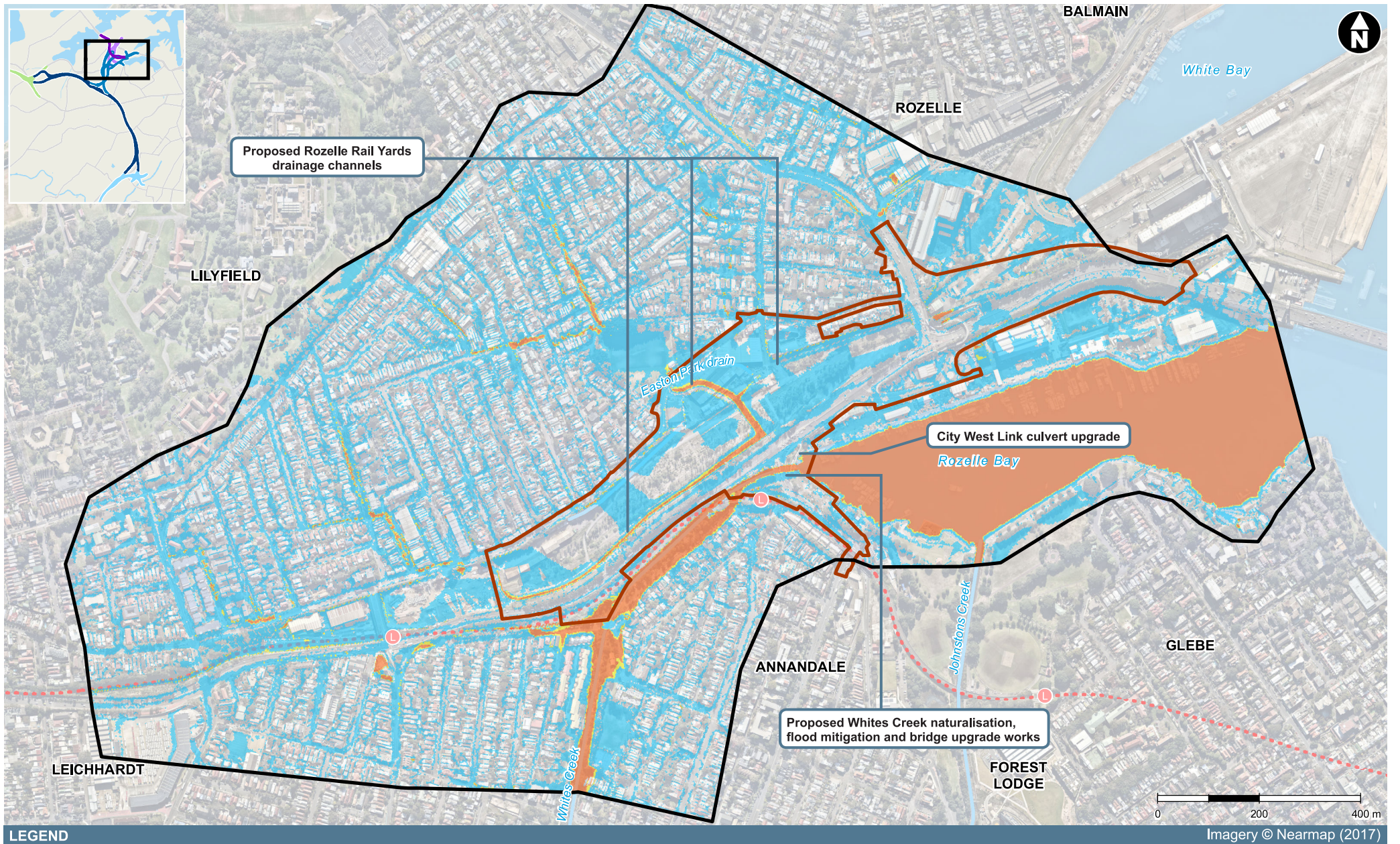


Figure 6-7 Proposed design conditions flood behaviour – Rozelle interchange - provisional flood hazard (100 year ARI)

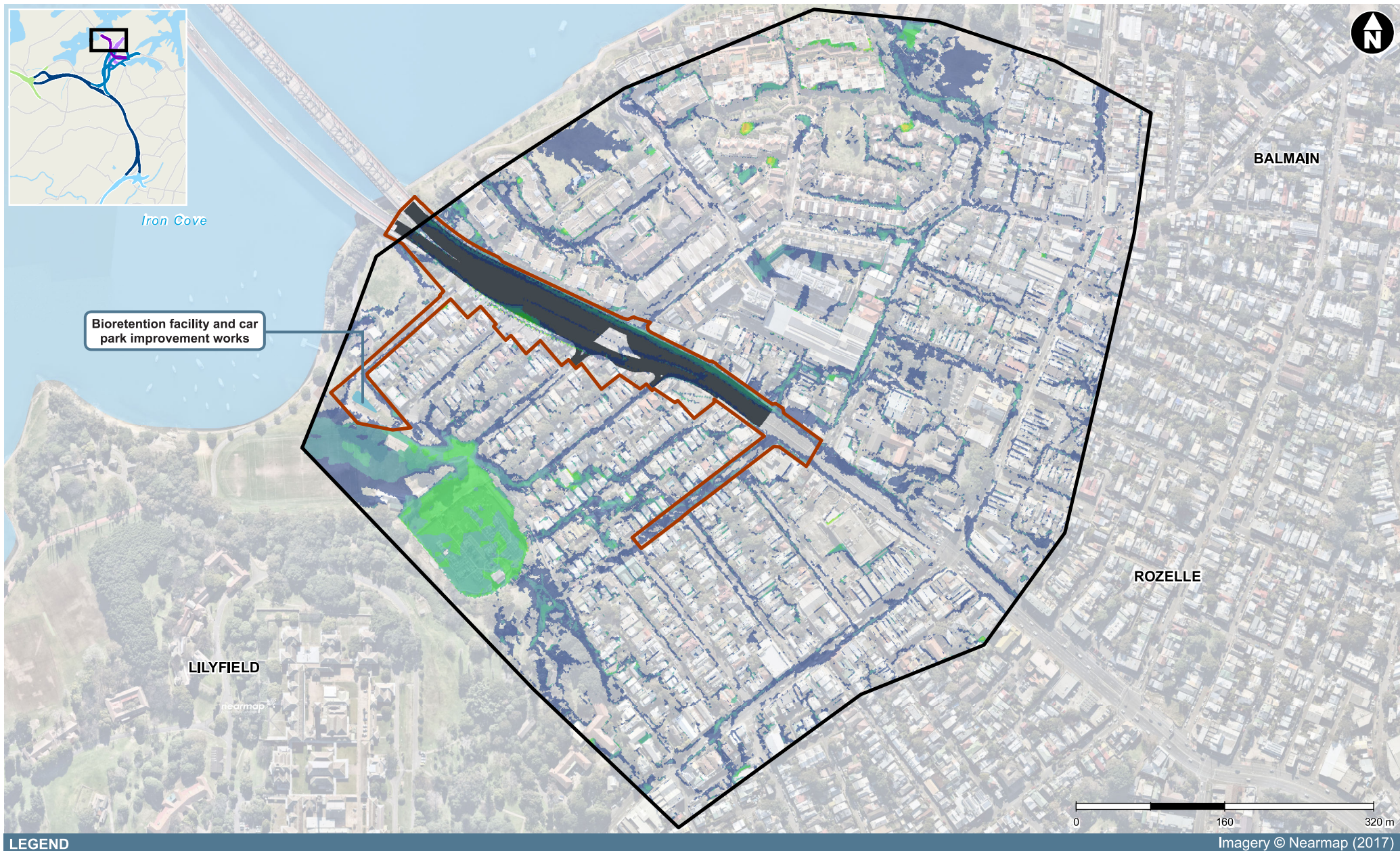


Figure 6-8 Proposed design conditions flood behaviour – Iron Cove Link - peak flood depths (10 year ARI)



LEGEND

Existing features	M4-M5 Link	Proposed landscape and drainage features	Peak flood depths (m)		
Waterway	Project footprint	Surface Road	<0.05	0.25 to 0.5	1.5 to 2.0
	Model extent	Bioretention facility	0.05 to 0.1	0.5 to 1.0	2.0 to 2.5
			0.1 to 0.25	1.0 to 1.5	

Figure 6-9 Proposed design conditions flood behaviour – Iron Cove Link - peak flood depths (100 year ARI)



LEGEND

Existing features	M4-M5 Link	Proposed landscape and drainage features	Peak flood depths (m)
Waterway	Project footprint	Surface Road	<0.05
	Model extent	Bioretention facility	0.05 to 0.1
			0.1 to 0.25
			0.25 to 0.5
			0.5 to 1.0
			1.0 to 1.5
			1.5 to 2.0
			2.0 to 2.5
			>2.5

Figure 6-10 Proposed design conditions flood behaviour – Iron Cove Link - peak flood depths (PMF)